

## ARLINGTON HEIGHTS PARK DISTRICT DUAL SYSTEM OF CONTROL

The Dual System of Control is a system using 2 persons to referee the game. Both officials are equal and call fouls and offside. Each official should call the fouls he/she sees, even in the other half of the field (erroneously called “other ref’s area”).

**Pregame conference.** Essential to competent officiating of any game is the pregame conference between both officials. This is the time when an understanding is developed concerning positioning, making calls, and rules enforcement.

**Kickoffs.** To start each period and after goals, the position of the officials should be as shown in Diagram 1. Each official should check with the team in his/her end to determine that they are ready to play. The trail official blows the whistle to start play.

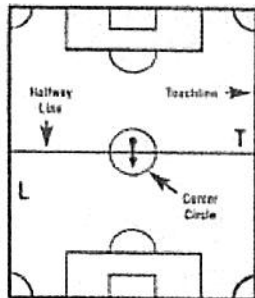


Diagram 1

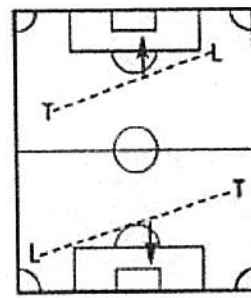


Diagram 2

**Movement Patterns.** In the Dual System, there is always a lead official (L) and a trail official (T). Usually the ball and play will be between them. See Diagram 2.

The lead official is generally ahead of the ball on plays to his/her right. He/she is responsible for covering the touchline and nearer goal line. In addition, the lead official must be in position to rule on offside. The trail official will normally be behind the ball on plays to his/her left. His/her attention will be on play around the ball. Movement of the trail official into the other half of the field will depend on the style of the game (kick and run vs. ball control, as well as speed of the players.) Penetration of the trail official into the other half will help “box” the play and prevent missed calls near the touchline. (The lead official usually has a “side-on” view while the trail official has view from directly behind the players enabling him/her to see contact by arms and elbows.)

At some time, the trail official will become the lead official and will have to rule on goal line plays to the right. The position of the ball will dictate which official will be responsible for off-the-ball coverage.

When play gets near to the touchline, the official should move off the field into the area between the touchline and the dashed line 1 yard outside the touchline.

Field conditions may dictate that the officials’ positions are reversed: L in SE quadrant and T in NW quadrant, so the diagonal runs from NW to SE.

**Free kicks.** When the ball has been properly placed, trail official will give the appropriate signal (DFK, IFK) and the lead official will whistle, when necessary, to restart play.

**Goal Kicks.** The trail official's position is near the top of the penalty area. He/she is responsible to see that all opponents are out of the penalty area, and that the kick clears the penalty area before it is played a second time.

The lead official should be approximately where the ball is expected to be kicked, watching mainly for illegal pushing. If the ball is kicked to the goalkeeper's right, the lead official should see that the ball clears the penalty area before it is played a second time.

**Corner kick.** When a corner kick is taken, the position of the referees is as shown in diagrams 3 and 4. The position can be varied according to the play of the game. L ref has responsibility if the ball is in play or over the goal line, including whether a goal is scored. The trail referee watches play from his/her vantage point. Both refs may call fouls during the corner kick.

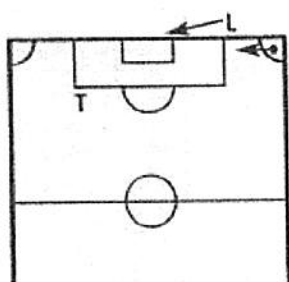


Diagram 3

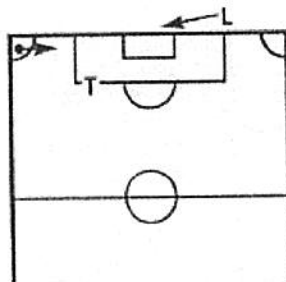


Diagram 4

**Throw-in.** The official on the touchline where the throw-in is made will be responsible for the position of the feet. The official on the opposite touchline will watch the hands and release of the ball. He/she will also watch for pushing and holding.

**Penalty kick.** When a penalty kick is called, one official will pick up the ball and take it to the penalty spot. Both officials will assist the players in moving to their positions for the kick. The lead official will tell the kicker to place the ball on the spot for the kick. The lead official will then ensure the goalkeeper is ready and understands that he/she may move laterally on the goal line, but may not move off the line until the ball is kicked. The lead official also advises the goalkeeper that the ball may be played when the whistle is sounded.

The lead official shall be positioned near the goal post on his/her side of the field and will whistle for the penalty kick to be taken. The main responsibilities of the lead official are to act as goal judge and to see that the goalkeeper stands on the goal line and does not move off the goal line before the ball has been kicked.

The trail official will be positioned near the top corner of the penalty area opposite the lead official. See Diagram 5. His/her responsibility is primarily to watch for infringements of the penalty area and quarter arc by members of either team, and infractions by the kicker.

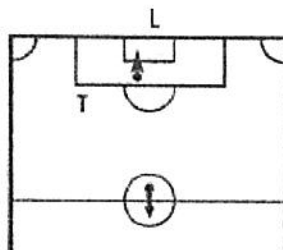


Diagram 5

## **RESPONSIBILITY FOR WHISTLING, if necessary**

### **SITUATION**

Start of each half  
Kickoff after goal  
Drop ball  
Goal kick  
Corner kick  
Penalty kick  
Free kick  
Throw-in

### **OFFICIAL**

Trail  
Trail  
Trail  
Trail  
Lead  
Lead  
Lead  
Usually official on side of throw-in, but may be official on other side after a substitution.